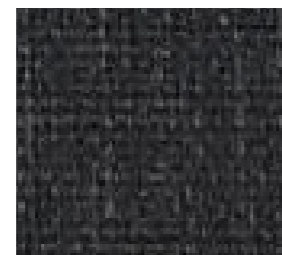




LINEA - BORDERLINE



TESSUTO - STRETTO



TESSUTO - CARBONE



TESSUTO - GESSO



TESSUTO - GRIGIO



LINEA - OUTLINE



LINEA - STRINGLINE



LINEA

Commercial Upholstery Fabric



Couch covered in LINEA CRUISELINE

LINEA

LINEA

Commercial Upholstery Fabric

SPECIFICATIONS

Composition	85% PVC 15% Polyester Gauge: 1.0mm Roll length: 30m Roll width: 137cm Pattern Direction: Railroaded.
Abrasion resistance	Test method AS 2001.2.25 (12kPa) Martindale method. No significant wear after 50,000+ rubs.
Meets F.R. standards for use in commercial areas	F.R. properties: Tested to Australian Standards (AS 1530.3) Spread of flame: 0 Smoke developed: 5 I.M.O. Standards A. 652 (16) AS/NZS 3837 <i>Fire test certificates available upon request.</i>
Anti-microbial & anti-bacterial	Sanitised to inhibit growth of bacteria, mould & mildew.
Colour fastness to light	LINEA is UV stabilised and suitable for indoor and outdoor use. Light fastness rating 6-7 ISO 105-B02-1994 (Grey scale 1-5).
Colour fastness to bleach	Tested to Australian Standards (AS 2001.4.11) No change of colour rating 4-5.
ROHS standards	LINEA is ROHS certified, restricting the use of hazardous substances. No formaldehyde, lead, mercury & chromium is used in the manufacturing process.
Protech	A protective top surface allowing easy removal of difficult stains and dirt.
Usage	Suitable for heavy commercial upholstery, marine, healthcare & screens.

CARE & CLEANING

Most stains can be cleaned using warm soapy water, followed by clean water rinsing. Moderate scrubbing with a medium bristle brush will help loosen soiling from the embossed surface. Failure to follow cleaning instructions may permanently stain and reduce the life of the vinyl. For further cleaning information, please contact Austex Fabrics for a product cleaning guide.



All Austex products are designed and manufactured in accordance with the quality assurance system ISO 9001.

-  FIRE RETARDANT
-  MOULD & MILDEW RESISTANT
-  UV STABILISED
-  BLEACH CLEANABLE
-  STAIN RESISTANT
-  ENVIRONMENTALLY FRIENDLY
-  INDOOR
-  OUTDOOR

AUSTEX
FABRICS

AUSTEX

AUSTEX FABRICS
15-19 Heyington Ave
Thomastown Victoria
3074 Australia
T 03 9484 9744
F 03 9484 9747
sales@austexfabrics.com.au
www.austexfabrics.com.au

AUSTEX
FABRICS



LINEA-COASTLINE



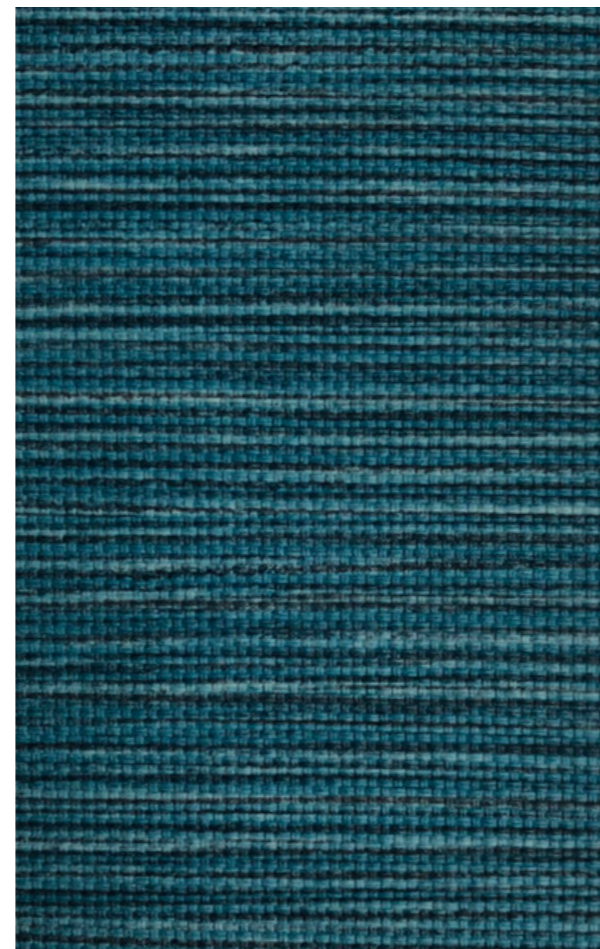
TESSUTO-GESSO



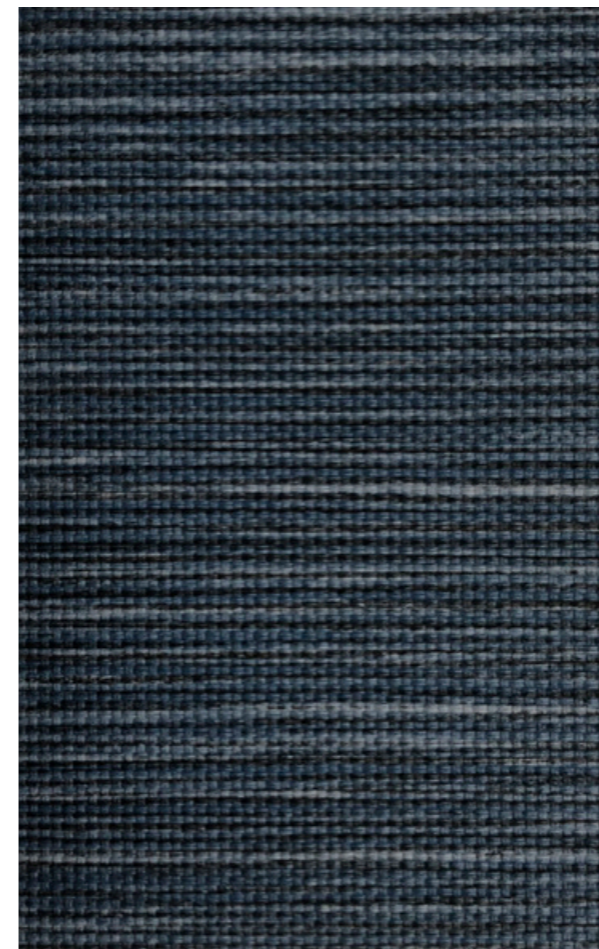
TESSUTO-SABBIA



TESSUTO-BLU



LINEA-CRUISELINE



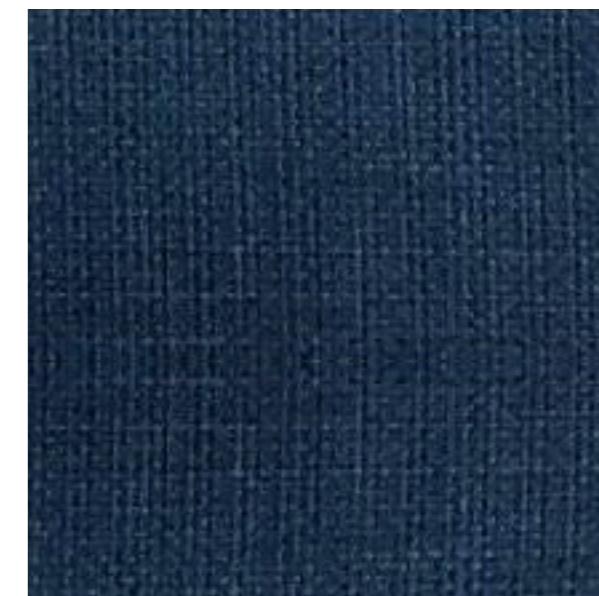
LINEA-STREAMLINE



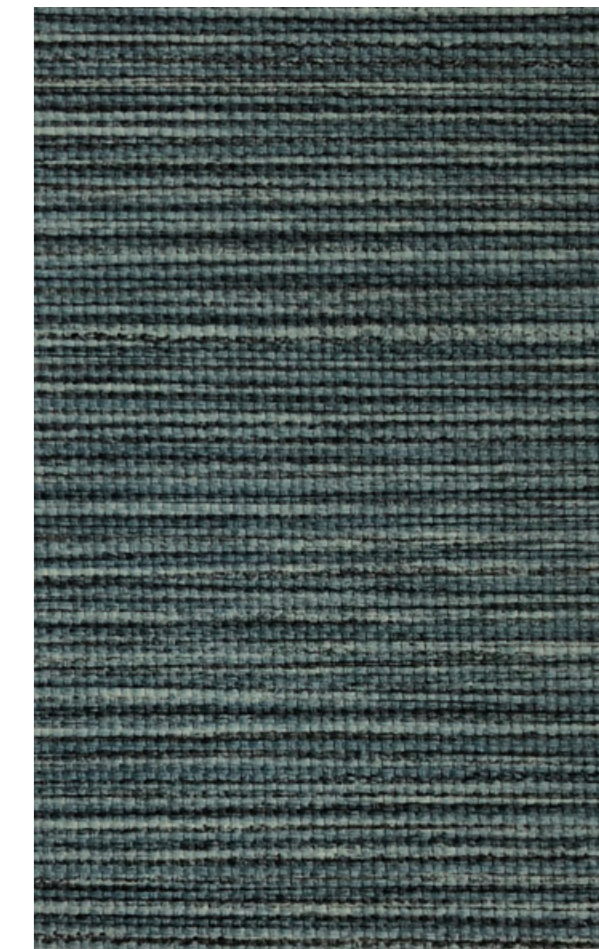
TESSUTO-MARINA



TESSUTO-CARBONE



TESSUTO-BLU



LINEA-PIPELINE



TESSUTO-MANDARIN



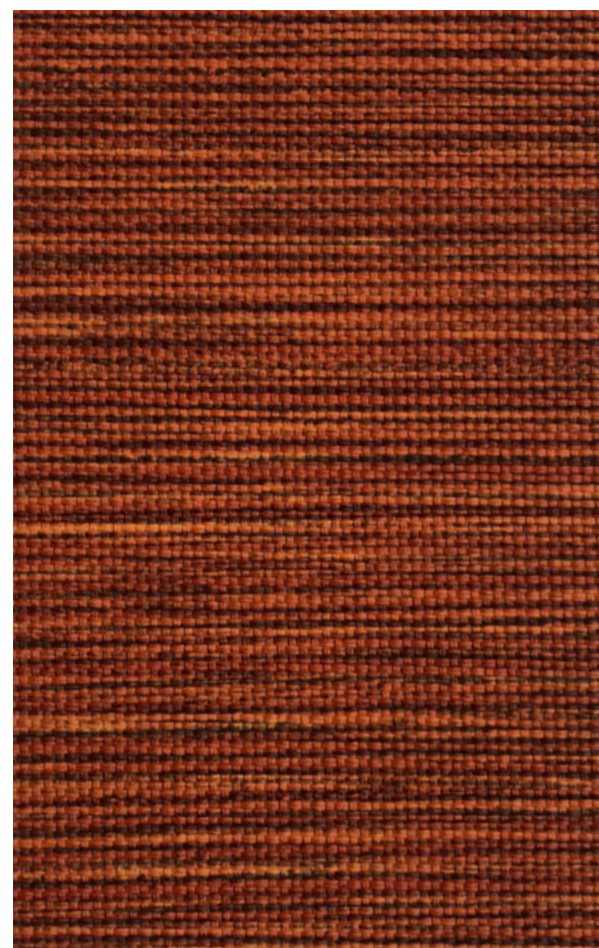
TESSUTO-RUSTICA



TESSUTO-SALSA



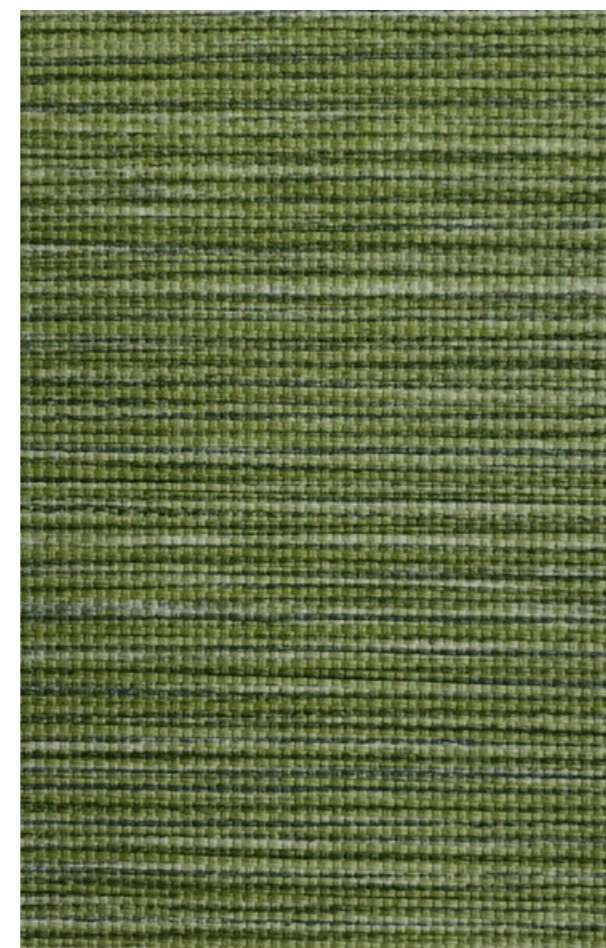
TESSUTO-MARINA



LINEA-HOTLINE



LINEA-BLOODLINE



LINEA-LANDLINE



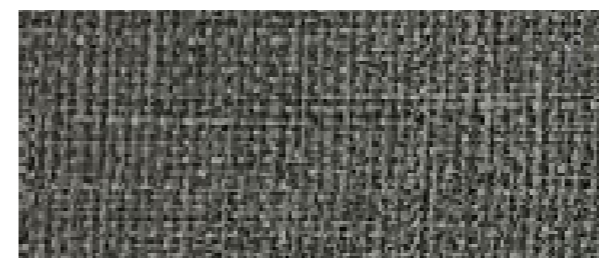
TESSUTO-SABBIA



TESSUTO-VERDE



TESSUTO-OLIVE



TESSUTO-CHIELO



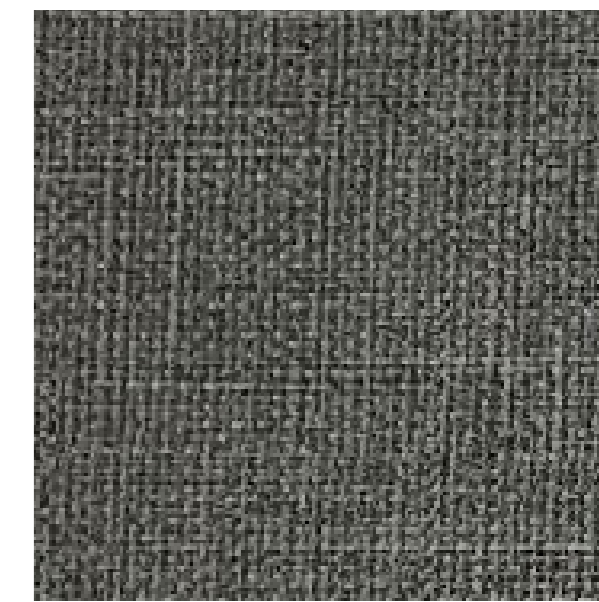
TESSUTO-CARBONE



LINEA-DEADLINE



LINEA-TIMELINE



TESSUTO-CHIELO



TESSUTO-GRIGIO